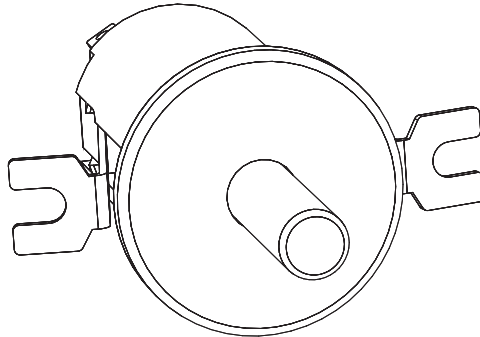


MASTERBUILT®

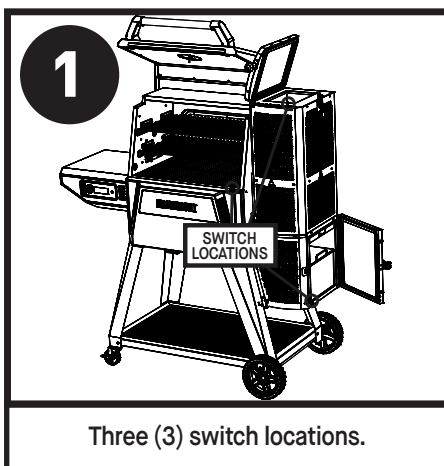
Lid Door Switch Instruction Sheet

Gravity Fed Grill CGP24G1D, CGP28G1D, CGP30G1D

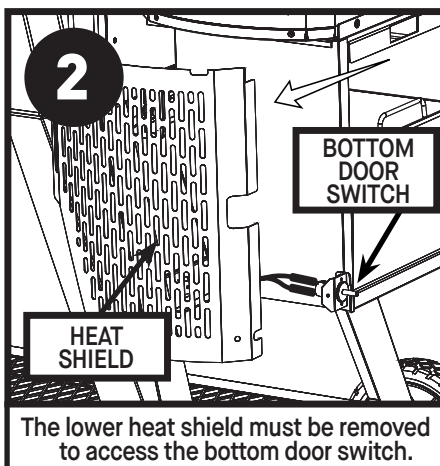


CAUTION

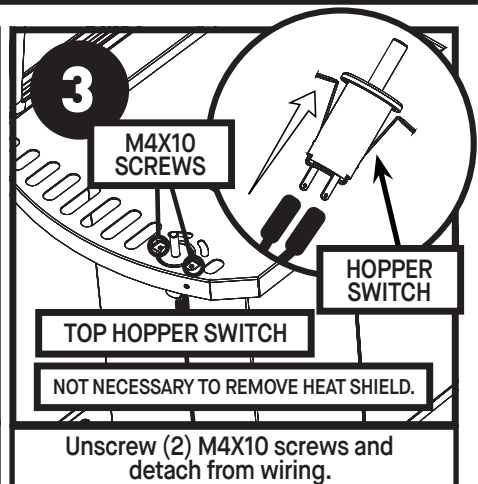
- Always remove plug from outlet before servicing your grill.
- Make sure your grill has fully cooled to avoid burns.
- Some components may have sharp edges. Use caution to avoid injury.



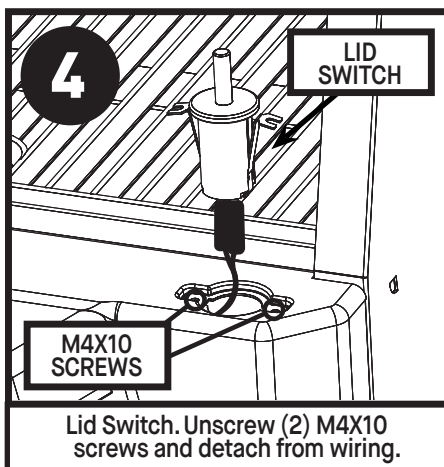
Three (3) switch locations.



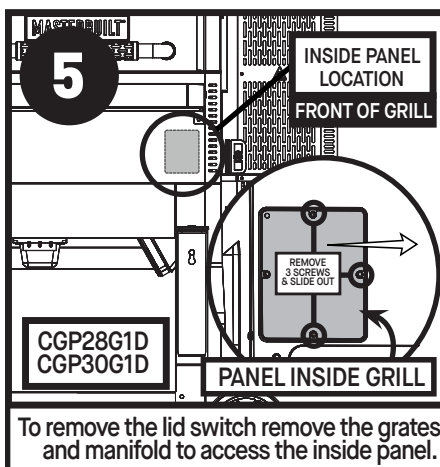
The lower heat shield must be removed to access the bottom door switch.



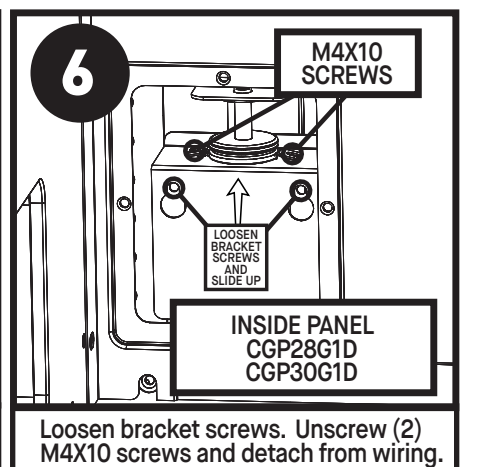
Unscrew (2) M4X10 screws and detach from wiring.



Lid Switch. Unscrew (2) M4X10 screws and detach from wiring.



To remove the lid switch remove the grates and manifold to access the inside panel.



Loosen bracket screws. Unscrew (2) M4X10 screws and detach from wiring.

INSTALLATION:

- Replace the switch using the (2) M4X10 screws (see step 3).
- Attach the wiring to the new switch.
- Replace the heat shield for bottom door switch replacement (see step 2).